

# ANNUAL REPORT 2017



*Serving the communities of*  
**Sonoma, Valley of the Moon, and Glen Ellen**

## Dedication from Fire Chief Stephen Akre

---



The 2017 Sonoma Valley Fire and Rescue Authority's (SVFRA) Annual Report is dedicated to the Sonoma Valley Community and the men and women of the SVFRA. The Sonoma Valley Community's support of each other and the responders during the Fire Siege of 2017 was beyond compare. Neighbors helped neighbors: from emergency notifications and evacuations, to sharing their homes, and supporting the large community shelters. Community members and businesses supported the fight to save our community by providing much needed food, water, and other assistance to the responders. Finally, our Sonoma Valley Community has continued to be Sonoma Strong and support each other during the ongoing recovery and healing process.

The men and women of the Sonoma Valley Fire and Rescue Authority, both career and volunteer, as well as former and retired members, demonstrated unsurpassed professionalism, commitment, bravery, effort, and dedication in saving lives and protecting our community during the Fire Siege that collectively became the Nuns Fire. Every member returned to duty during the fires—some from out of state and even out of country. They fought on the fire lines for over 4 days straight without relief, and many worked over 2 weeks straight in the effort to defend our Community. They performed admirably in the most extreme of circumstances and without the resources we needed and would normally have.

---

I am honored to be able to present the first Sonoma Valley Fire and Rescue Authority's Annual Report for the year 2017. The year 2017 was a very exciting, challenging, and momentous period of time within our organization's history and that of our beloved Sonoma Valley. I am incredibly proud of this organization and all of its members (career and volunteer) and their continuous efforts to provide exceptional service to our communities. We are an organization that is driven by our Mission, Vision, and Values and a Community-driven Strategic Plan. As an organization that strives for continuous improvement, we are in the ongoing process of evaluating our fire and EMS response system and what we can do to better prepare for the future.

We also experienced the growth of our organization's family as we welcomed the Glen Ellen Fire Department and its members into the SVFRA through a 5-year contract for services with the Glen Ellen Fire Protection District. This contract has resulted in an improvement in service for the Glen Ellen Community, as we now provide a 24/7 paramedic-staffed engine. We have realized an average one minute and 56 second improvement in response times.

## Dedication from Fire Chief Stephen Akre (cont.)

---

Our organization has a very long history of commitment and engagement with our community. One of many examples is that the Sonoma Volunteer Firefighters Association (SVFA) has been putting on the 4th of July Fireworks Show for over 45 years. In 2017, the SVFA took over the production of the Hometown Parade and Plaza Community Celebration, as well. It was a tremendous success!

I hope that the community enjoys the opportunity to read this report and learn more about who we are as an organization and the many ways that we proudly provide exceptional emergency service. I encourage you to come by and visit one of our fire stations and learn more about our organization and how we can help you to be more fire safe and better prepared for emergencies.

STEVE



## 2017 Valley of the Moon Fire District Board of Directors

---



William Norton  
President  
14 Years of Service



Raymond Brunton  
Vice President  
29 Years of Service



Nicholas Greben  
11 Years of Service



Brian Brady  
Clerk  
3 Years of Service



Terrence Leen  
3 Years of Service



## **Sonoma Valley Fire & Rescue Authority**

### **Mission**

The Sonoma Valley Fire & Rescue Authority exists to protect the quality of life for present and future generations through interaction with our community, compassionate service, and an atmosphere that encourages innovation, professionalism, and diversity.

### **Values**

**Strategic      Visible      Flexible      Responsive      Accountable**

### **Vision**

The vision of the SVFRA is to consistently demonstrate our values in fiscally sustainable mission delivery. This will be evident in our commitment to the organization's:

**S**trategic plan direction, as determined by community input and broad organizational involvement, within our organization and regionally;

**V**isible and proactive public information and community outreach efforts;

**F**lexible workforce, appropriately staffed and well-prepared to ensure organizational success in changing environments;

**R**esponsive leadership that will support the provision and maintenance of physical resources that enable all personnel to safely, efficiently, and effectively carry out their duties;

**A**ccountable personnel, throughout the organization and governing body, who will meet or exceed the community's expectations.

Our culture of continuous improvement will be widely recognized as we deliver our mission, live our values, accomplish our community-driven goals, and realize our vision.

# Sonoma Valley Fire & Rescue Authority

---

The Sonoma Volunteer Fire Department was organized in 1888 and the Valley of the Moon Fire Protection District formed in 1926 to provide adequate fire protection for the homes, farms, places of business, and natural resources of the Sonoma Valley. Through the years, the Volunteer Firefighters of the City of Sonoma and Valley of the Moon Fire Protection District (VOMFPD) have continued to provide these services. As the population in the Valley increased, the fire agencies began to hire full-time, career personnel to fulfill their mission of protecting the community. On February 1, 2002, the City of Sonoma and VOMFPD formally established a partnership by entering into a Joint Powers Agreement and created a public entity known as the Sonoma Valley Fire & Rescue Authority. The purpose of the partnership was to eliminate duplication of equipment, personnel and resources, control costs, and provide higher levels of fire and rescue services to both communities. This relationship continued to evolve, and on December 19, 2011, the JPA was dissolved and the City of Sonoma signed a contract for fire and emergency medical services with the Valley of the Moon Fire Protection District to further eliminate duplication of administrative services. The VOMFPD is now the single employing and governing agency.

The Valley of the Moon Fire Protection District continues to operate using the Sonoma Valley Fire & Rescue Authority (SVFRA) name. The SVFRA provides all-risk fire, rescue, and emergency medical services to the communities of Agua Caliente, Boyes Hot Springs, Diamond-A, El Verano, Fetters Hot Springs, Temelec, Seven Flags, and through contracts for service to the City of Sonoma and Glen Ellen. In the fall of 2016, the Glen Ellen Fire Board contacted the SVFRA and started discussions with the idea of the SVFRA providing staffing and fire and emergency services to Glen Ellen. On July 1, 2017, the Glen Ellen FPD volunteers and employees became employees of the SVFRA. SVFRA personnel now staff Station 5 with a Captain and Paramedic Engineer, 24/7, 365 days a year. The District maintains 4 career fire stations and 2 volunteer-staffed stations, an administrative office, and a maintenance facility. The District staffs 6 companies: 4 Paramedic Engine Companies and 2 ALS Ambulances. The District also staffs an assortment of specialized equipment through the supplemental staffing of 41 dedicated Volunteer Firefighters. This equipment includes a Ladder Truck, 2 Rescues, 2 Water Tenders, 4 Wildland Fire Engines, and an Office of Emergency Services (OES) Fire Engine.

Within the boundaries of the District are expansive wildland urban-interface (WUI) areas, large single-family homes, multi-family residential complexes, hotels, a local hospital, and a historic downtown Plaza.

The District also provides ambulance service to the greater Sonoma Valley, an area of approximately 100 square miles.

## Sonoma Valley Fire & Rescue Authority (cont.)



Area: 58.5 square miles

- Valley of the Moon Fire District – 31.5 sq. miles
- City of Sonoma – 2.74 sq. miles
- Glen Ellen Fire District – 27 sq. miles

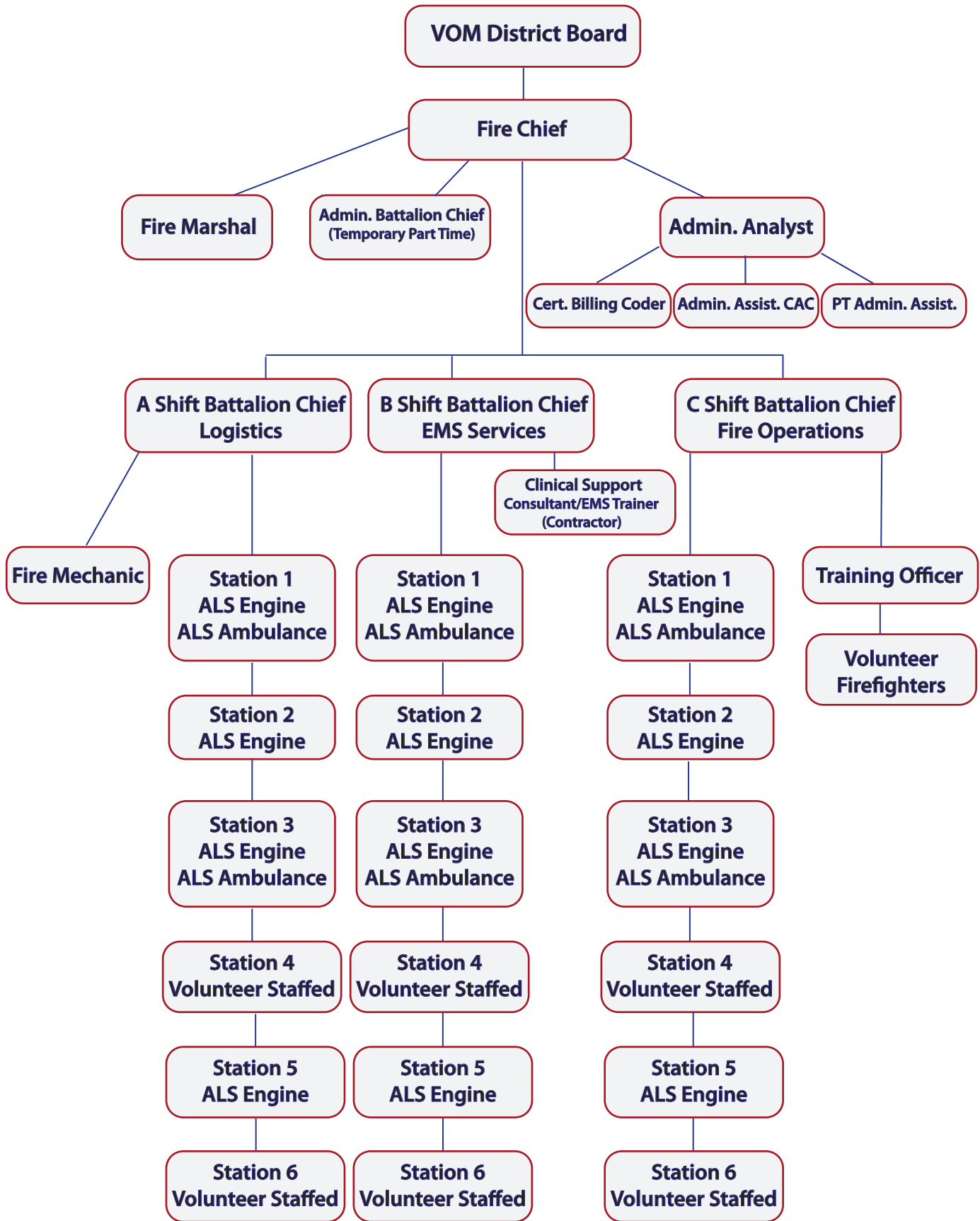
Population: 47,100

- Valley of the Moon Fire District – 33,000
- City of Sonoma – 11,000
- Glen Ellen Fire District – 4,000

Department Personnel

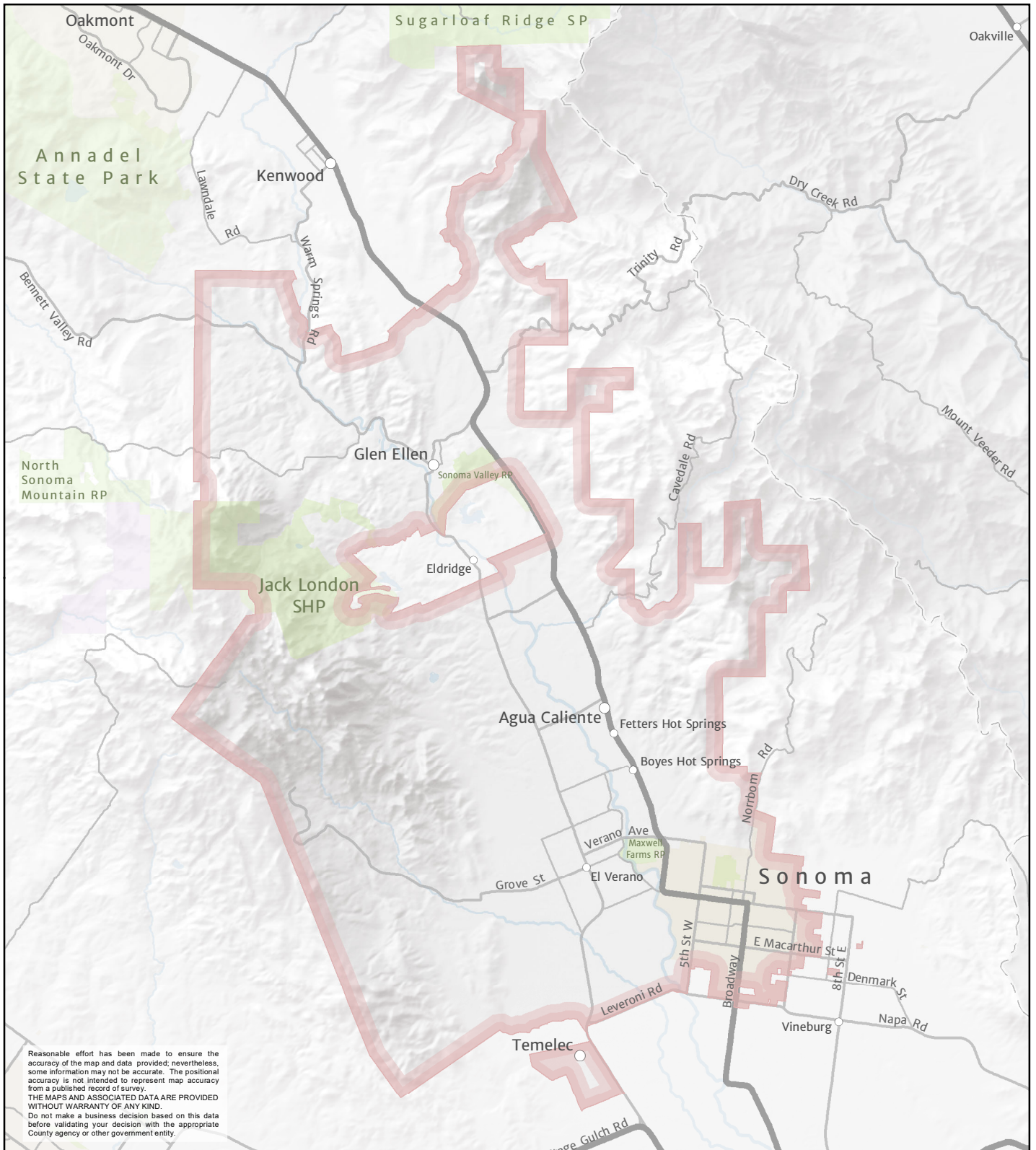
- Operations  
40 full time / 40 volunteer
- Administration  
4 full time / 3 part time
- Training  
1 full time
- Prevention  
1 full time

# Sonoma Valley Fire and Rescue Authority Organizational Chart





# Sonoma Valley Fire and Rescue Authority Coverage Area



## Glen Ellen Fire Protection District

---

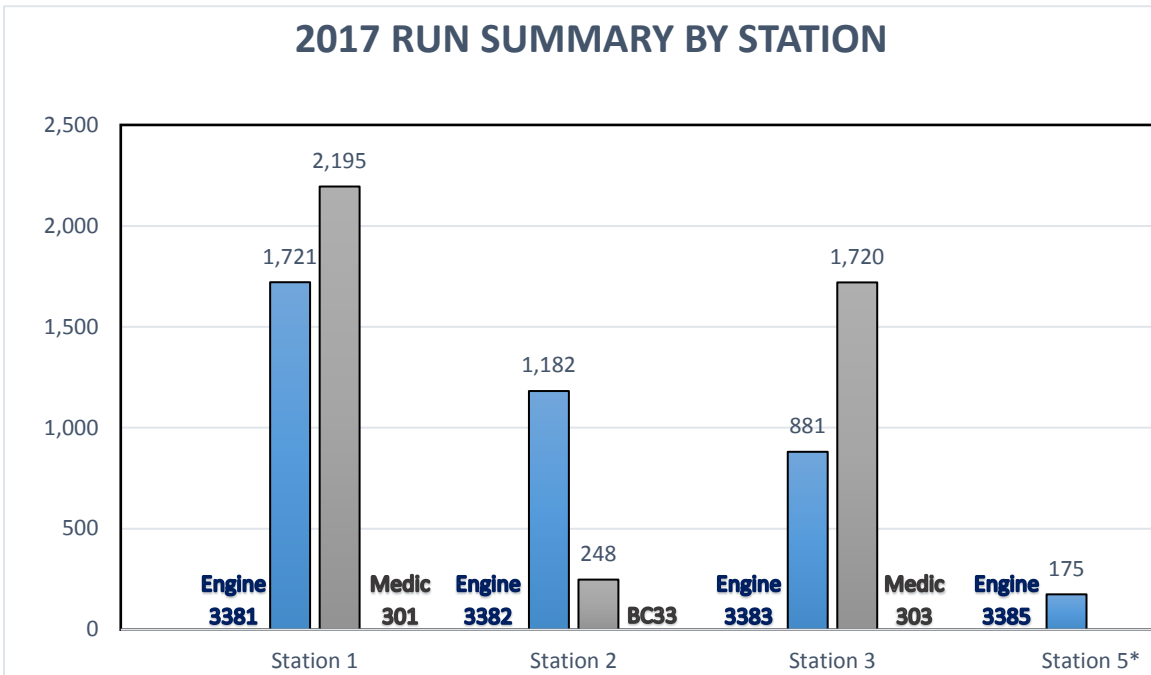
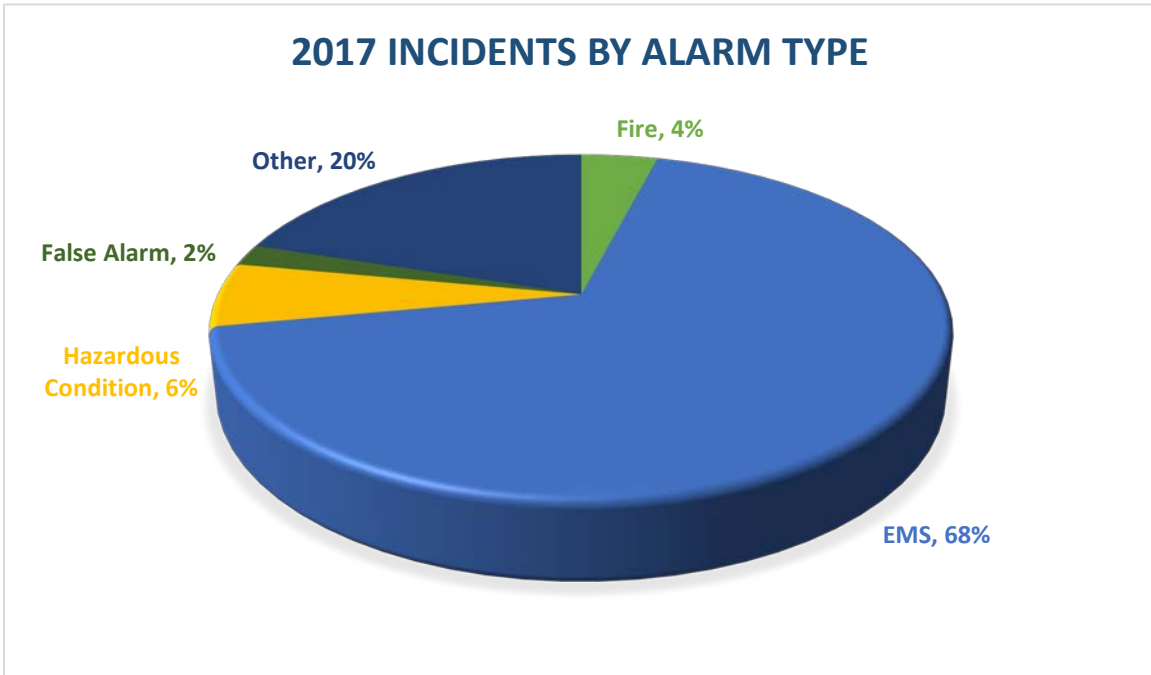
The Glen Ellen Fire Department (GEFD) was formed in 1924 as a Volunteer Fire Department after a devastating fire in 1923. The GEFD purchased their first Fire Engine in 1924, a Ford Model T, which is on display in the Sonoma Valley Fire Museum at the Albert C. Mazza Fire Station. In 1955, Glen Ellen transitioned from a Volunteer FD to a Fire Protection District, which is managed by a 5-member board that is elected by the citizens of the District.

For many years, the District remained a mostly Volunteer Fire Department with only a small paid staff whose primary function was to support the Volunteers. The volunteers were generally local residents who lived and worked in the area. The Fire Department was the hub of the community. Social functions, such as the Firefighters' Ball, were prominent events. The Fire Department was always there for whatever the community needed. As the years passed, so did the practicalities of maintaining a mostly Volunteer Fire Department. The days of volunteering to help your community were changing as increased State and Federally-mandated training standards were implemented. All volunteers had to meet these new standards. The numbers of Volunteers started to drop as people had many competing interests for their time—family obligations, working out of town—all while having to attend weekly training sessions and respond to calls at all hours of the day and night.

In 2016, the Glen Ellen Board of Directors approached the Sonoma Valley Fire and Rescue Authority to ask if the SVFRA would be interested in providing service to the Glen Ellen District. The reason was simply because call volume had increased and the availability of Volunteers to respond to those calls had seriously diminished. SVFRA staff developed a proposal to staff the Glen Ellen Station (now SVFRA Station 5) with a Fire Captain and Engineer, one of whom is a Paramedic, 24 hours a day, 365 days a year. The GE staff would become SVFRA employees. The Glen Ellen Board of Directors approved the proposal and the plan was put into motion with a 5-year contract to provide service. On July 1, 2017, SVFRA personnel staffed the station in Glen Ellen, and the Volunteers were welcomed into the SVFRA organization. Joint training began before the contract started and continued throughout the summer. That collaboration and foresight by the Fire Board was validated on Sunday night, October 8, 2017.

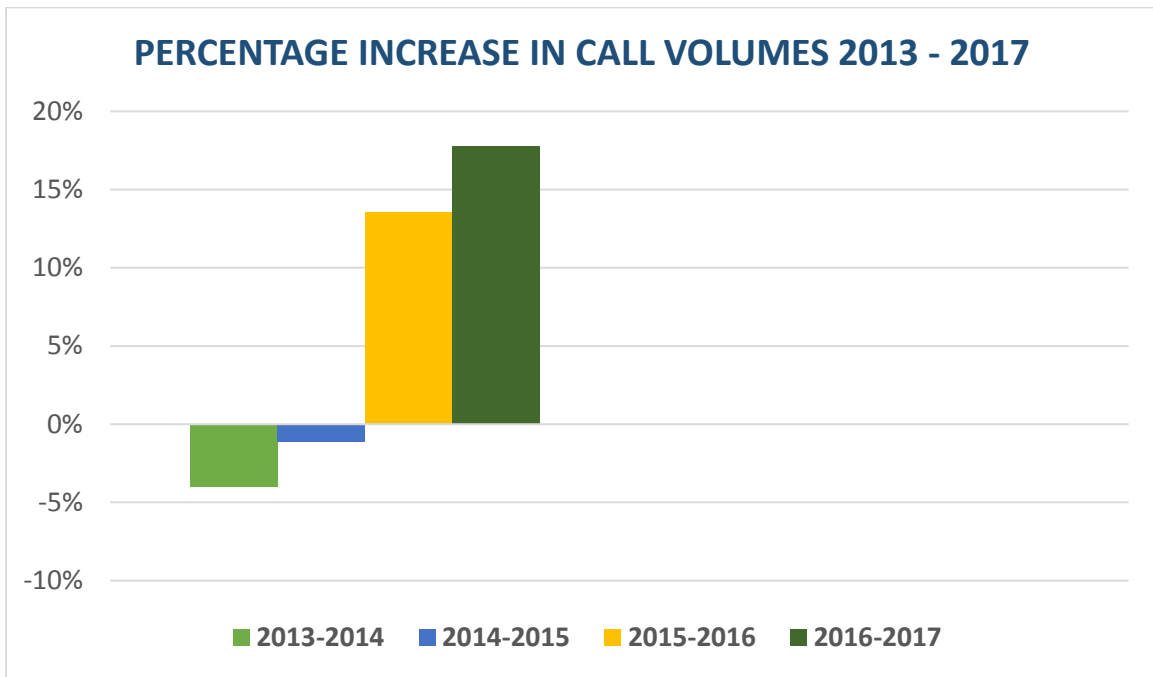
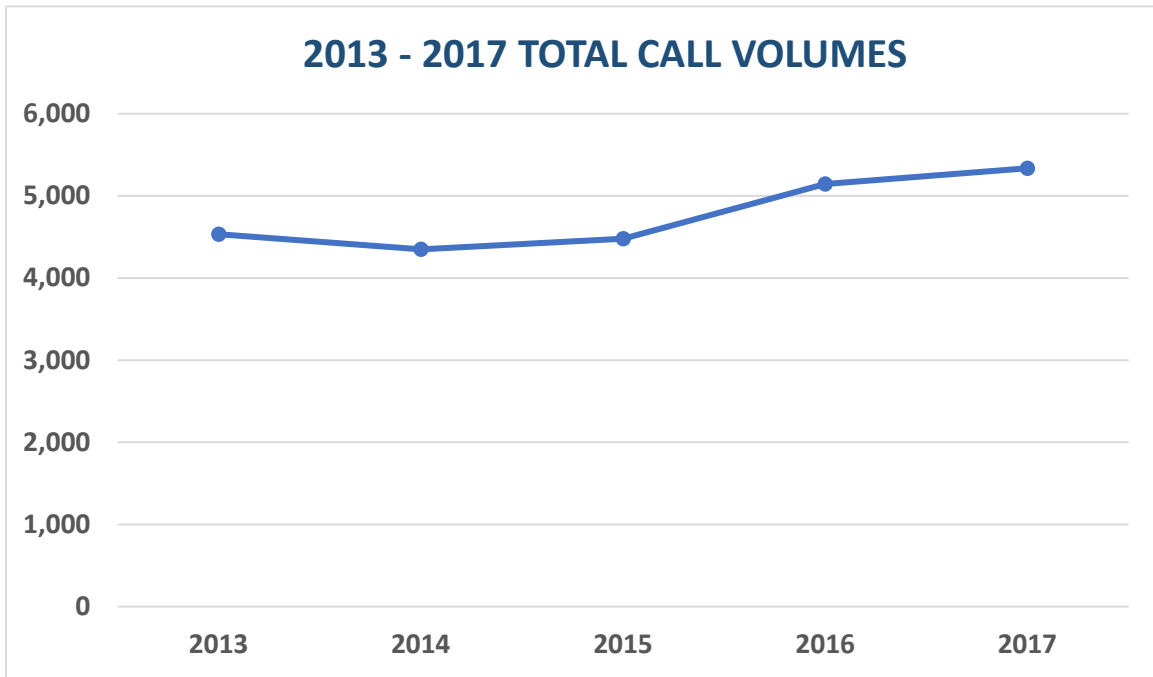
Over the next 8 days, a united SVFRA demonstrated the benefits of this new service. Crews worked seamlessly, staffing all SVFRA Fire Units, and their familiarization with the affected areas in Glen Ellen contributed to a more effective fire attack. As devastating as the Nuns Fire was, had we not been one agency, the devastation would have been far worse. Although some small changes have occurred, most aspects of the GEFD remain the same. The Fire Station is still the hub of the community and the on-duty crews along with the Volunteers are still very active and engaged in the community. The biggest change is that the level of service has greatly improved. The Glen Ellen community now has full-time Emergency response, a Battalion Chief, a Training Officer, and Fire Prevention support. Our SVFRA fire family has grown and will continue to do so, as community needs change in the future.

# 2017 Calls for Service



\*6-month period

## 2017 Calls for Service (cont.)



(Percentage decrease from 2013 to 2014 related to end of Infineon Raceway contract.)

# 2017 Run Summary



## Fire Station 1

### Albert C. Mazza Fire Station

630 Second Street West, Sonoma

Engine 3381           **1,721 runs**

Medic 301           **2,195 runs**



## Fire Station 2

877 Center Street, El Verano

Engine 3382           **1,182 runs**

Battalion Chief 33       **248 runs**



## Fire Station 3

1 West Agua Caliente Rd., Agua Caliente

Engine 3383           **881 runs**

Medic 303           **1,720 runs**

## 2017 Run Summary (cont.)

---



### **Fire Station 5**

13445 Arnold Drive, Glen Ellen

Engine 3385      **175 runs\***

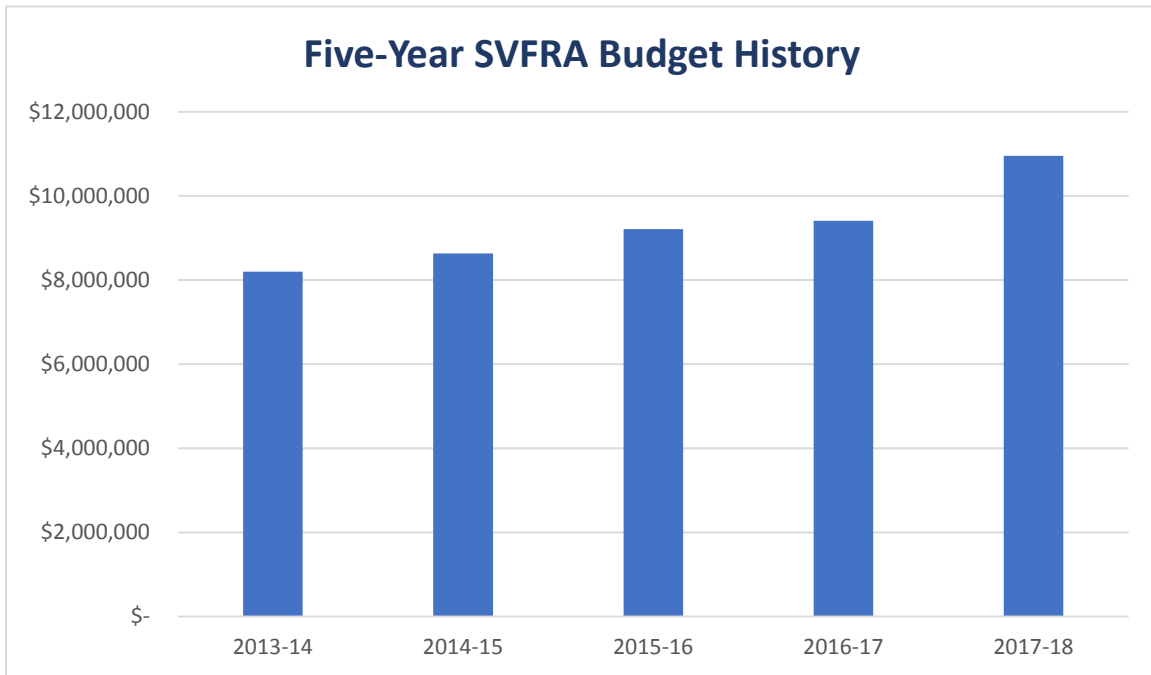
\*6-month period

---

Total Calls for Service in 2017:	<b>5,336</b>
Type of Call	
• Fire	<b>4%</b>
• EMS	<b>68%</b>
• Hazardous Condition	<b>6%</b>
• False Alarm	<b>2%</b>
• Other	<b>20%</b>
How often we up-staffed* an ambulance	<b>166 times</b>
Total Amount of Runs (5-year trend)	
• 2017	<b>5,336 runs</b>
• 2016	<b>5,146 runs</b>
• 2015	<b>4,480 runs</b>
• 2014	<b>4,349 runs</b>
• 2013 (including Infineon Raceway)	<b>4,532 runs</b>
Record Strike Team deployments	<b>21 Engines</b>
(not including October 2017 Fire Siege)	<b>10 Overhead Assignments</b>

**\*Note:** Up-staffing an ambulance is required when we experience more EMS calls at a given time than we have available ambulances. We move firefighter/paramedics from the fire engine to an ambulance for response. This flexibility allows us to best serve our community.

## SVFRA Budget History (2014 – 2017)

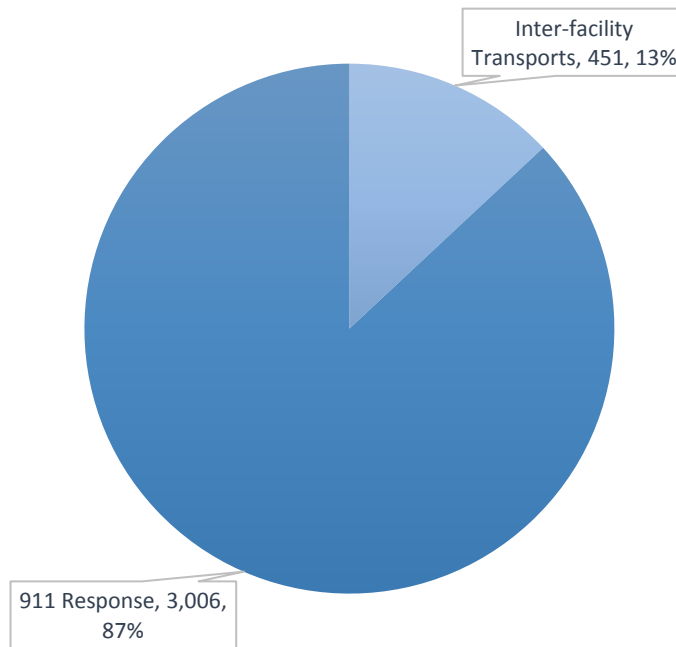


The Valley of the Moon Fire Protection District and the City of Sonoma each contribute to a combined operating budget for the Sonoma Valley Fire and Rescue Authority. The combined operating budget includes all personnel, small equipment, supplies, and other operating expenses. The contribution rates for the operating budget are mutually agreed upon and were established based on historical department size and budgets prior to joining together. The City of Sonoma contributes 57% of the operating budget and the Valley of the Moon Fire Protection District contributes 43%. Each agency continues to maintain its respective capital and replacement budgets for facilities and large equipment.

## EMS Services

The SVFRA takes pride in providing Advanced Life Support Services at the paramedic level: the highest level of Emergency Medical Services that can be offered in the State of California. Our daily staffing consists of 4 engines and 2 ambulances that have a minimum of one paramedic on each unit. All staffed fire engines and ambulances have the latest state-of-the-art equipment, such as heart monitors capable of transmitting EKGs directly to hospitals where they can be examined by Cardiologists. Technology like this can help get patients to the proper facility from the field, where they can be treated rapidly and effectively, resulting in greater dispositions.

### EMS Incidents by Response Type



In 2017, the SVFRA transported almost 3,500 patients. Along with 911 ambulance services, we also provided special event standbys (such as Vintage Festival, Farmers' Market, SVHS Football games, etc.) and inter-facility transports from SVH Emergency Department. Providing these additional services ensures the safety of not only our community members, but the many visitors that frequent the Valley.

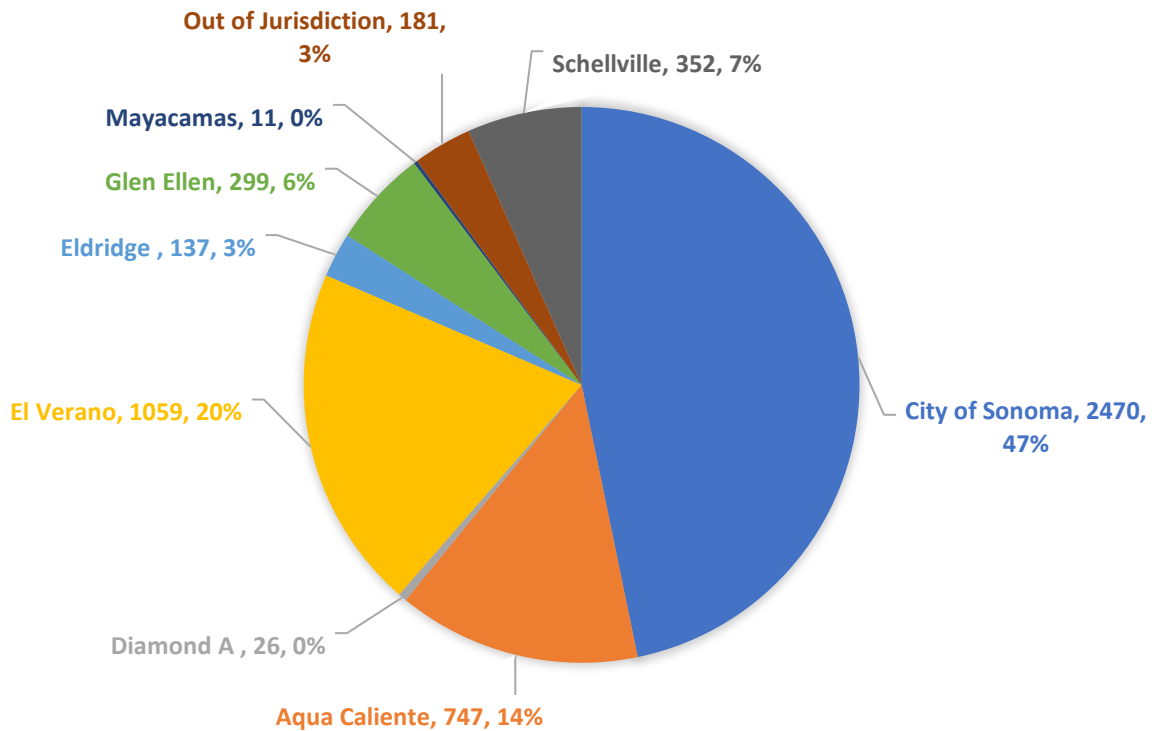
Geographically speaking, the Sonoma Valley is somewhat isolated from other areas of the County and has only one hospital: Sonoma Valley Hospital. The majority of our patients are transported here and either treated by SVH or transported out to a specialty center. As the SVFRA is the only local ambulance provider, we provide this essential transport service to the Emergency Department in order to get the patients to definitive care as quickly as possible.



## EMS Services (cont.)

Sonoma County has a very robust EMS delivery system with protocols in place to transport patients suffering from a heart attack or a traumatic injury directly to a specialty center equipped to handle these patients. We are frequently transporting patients to these specialty centers or other destinations outside of the valley that patients may request.

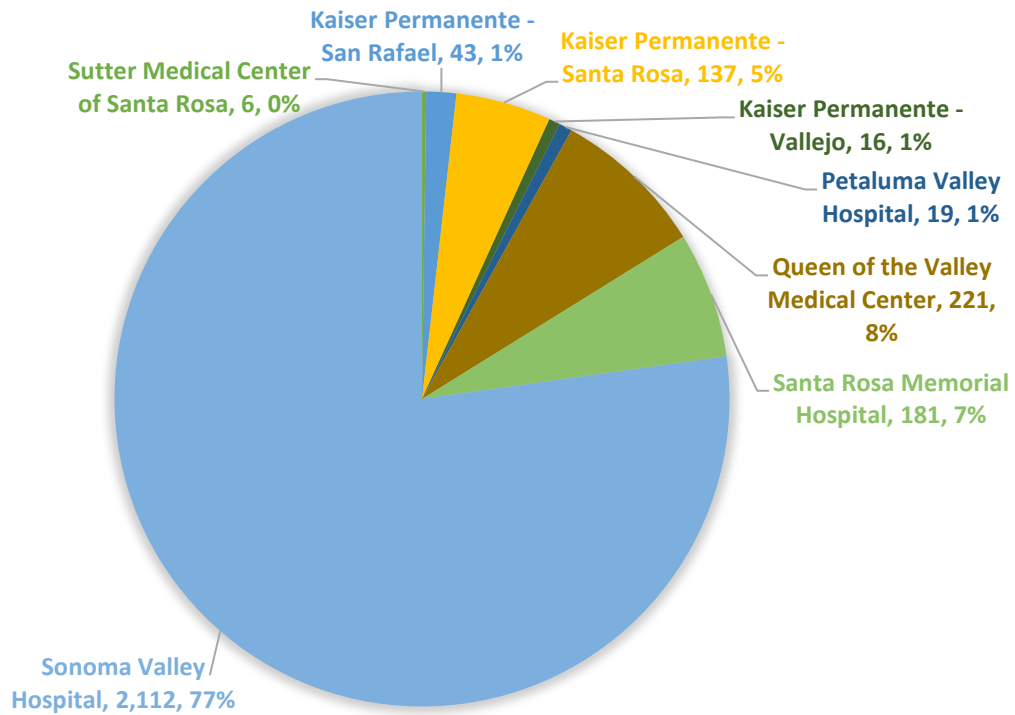
### INCIDENTS BY DISTRICT



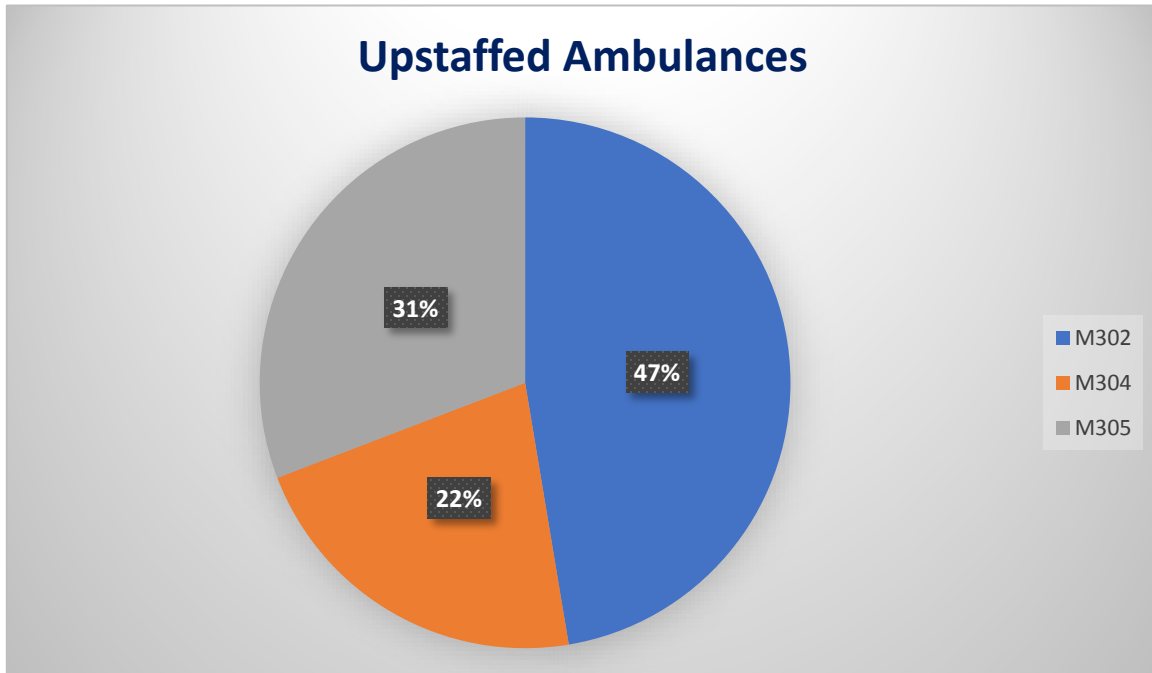
## EMS Services (cont.)

---

### INCIDENTS BY DESTINATION



We often have concurrent medical calls that require additional ambulances. Because we have paramedics on all of our engine companies, we are able to take the crew off the fire engine and “upstaff” additional ambulances when these situations occur. In 2017, we upstaffed an additional ambulance 133 times.



The SVFRA has one of the most robust EMS systems in the County and strives to provide the highest level of service to the community. We are constantly looking for ways to improve and keep current with modern medicine. We have our own Medical Director and an in-house Quality Assurance/Clinical Coordinator who continually monitors and trains our paramedics to the highest of standards.

Our ambulance membership program (AMP) is a subscription service that allows our residents to pay an annual fee of \$49 that covers all ambulance transports, with no charge to the patient. The \$49 fee covers all members of the household and both emergency and non-emergency ambulance transports for the entire year.

# Training

---



Total hours of training in 2017:

<b>9,668</b>	Career
<b>2,355</b>	Volunteer

The Training Division is tasked with ensuring that all personnel are meeting all of the State and Federally-mandated Training Requirements. Each Career Firefighter is required to train a minimum of 2 hours every day. This is in addition to special certification or career-enhancing training. Training is a combination of classroom and actual hands-on evolutions.

## Specialized Training:

- Two week in-house Academy for 6 new Apprentices
- Code 3 Driving course from our Risk Management Group

## Significant Accomplishments in 2017:

- Contract for Services with Glen Ellen Fire District
  - › Integrated those personnel into our system
- Burn Trailer acquisition for training
  - › A collaborative effort with a grant from the Sonoma County Board of Supervisors, Kenwood and Glen Ellen Firefighters Associations, and Sonoma Valley Fire.
- Region Drills
  - › Bring all on-duty crews in the Valley together to train monthly.
- Zone 3 Wildland Drill
  - › A drill that puts all the training done on Wildfire skill sets to work in a simulated Wildfire. This paid off in October!
- Return of full-time Training Officer position
  - › This position was lost in the economic downturn a decade ago. After staffing the job in a part-time capacity for nearly 2 years, the District Board authorized the Fire Chief to fill it full time.

## Sonoma Valley Volunteers



This group of approximately 40 members have been and continue to be our strong connection to our communities. The Volunteer Firefighters have been a major part of our Organization since 1888. They perform many roles: from fund raising, to sponsoring Community Events, to working as the 3<sup>rd</sup> Firefighter on the staffed engines. They respond on Strike Teams throughout the state, as well as responding to all fires and major calls in our district.

The Volunteers are required to train for a minimum of 2 hours each week. They must meet state and federally mandated training. There is additional training for those Volunteers who wish to become an Engineer or Captain. Many of our Volunteer Firefighters have successfully become career Firefighters both here in Sonoma Valley and other Fire Agencies throughout the state. The SVFA [a 501 (c) (3) charitable organization] serves our community by supporting the SVFRA's ability to conduct aggressive fire suppression, to minimize losses from fire and other hazards, and to provide emergency medical services support. It also provides fundraising support for the SVFRA, educates the public on fire danger and prevention, sponsors various social functions, and participates in several community events, like the Sonoma Valley Vintage Festival.

For the past 44 years, the Association has organized and produced the popular Sonoma 4<sup>th</sup> of July Fireworks Show. In 2017, the Volunteer Association took on production of the 4<sup>th</sup> of July Parade and Plaza Celebration.

With 130 years of continued service, the Volunteer Association has displayed unwavering commitment to the citizens of the Sonoma Valley. They look forward to many more years of service, ever adapting to the needs of the Sonoma Valley Community!



## Fire Prevention



The Sonoma Valley Fire Rescue Authority Prevention Section strives to provide a safe community for the citizens and visitors of The City of Sonoma, the Valley of the Moon Fire Protection District, and the Glen Ellen Fire Protection District by applying the principles of engineering, enforcement, and education. The Department utilizes the 2016 California Fire Code and Wildland Urban Interface Code. These codes help to protect property from the hazards of fire, explosion, or dangerous conditions in new and existing buildings and ensure firefighter and emergency responder safety during emergency operations. We also coordinate fire and life safety review of potential incoming projects, regular commercial occupancy inspections, education and outreach to at-risk populations in our community, as well as public information and fire investigations.

## Fire Prevention (cont.)

The Fire Prevention Section ensures that the requirements of the California Fire Code and National Fire Protection Association (NFPA) standards are engineered into future projects in our community. The prevention staff conducts plan reviews and approvals as well as providing technical expertise to developers, architects, contractors, the internal community development team, and our operational personnel.

The plan review process is critical to ensure that all pertinent updated codes are applied to new and remodeled buildings to provide for life safety of the occupants.

**184** Plan Reviews

**17** Permits Issued

Company inspections safeguard lives and provide familiarization of the building in the event of a fire. They also allow the crews to interact with the community, taking the opportunity to educate them in area of Fire Safety.

**847** Company Inspections conducted by Engine Companies

Every year, the SVFRA sends out reminders to property owners to clear weed growth that presents a fire hazard. Listed properties and those reported by concerned residents are inspected to assess the level of threat to the community.

**193** Weed Abatement notifications

**105** Property Inspections

The Prevention Section also oversees a large use of the City of Sonoma's outdoor facilities for temporary special events during the summer months. Prevention staff coordinates life safety reviews and inspections of these events to ensure public safety at large public gatherings including fairs, concerts, sporting events, and festivals. They also inspect and issue permits related to outdoor cooking, trade shows, and other high-profile events where tents are in place.

**30** Special Event Reviews and Inspections

Fire Investigations are a crucial component of closing the loop after a fire occurs. The Investigation can determine arson or accident, equipment failure, or act of God. If it is equipment failure, it can be reported to National Agencies to determine if in fact there is faulty equipment causing fires so that equipment can be recalled. Also, if there is a pattern, it can be investigated further.

**24** Fire Investigations in 2017

## Facilities



### Capital Improvements in 2017

#### **Station 1**

- Replaced floor cover in living quarters
- Added concrete pad for shop

#### **Station 2**

- Painted exterior
- Demolished old shop
- Repaved and fenced parking lot

#### **Station 3**

- Joint purchase with valley fire agencies of Turnout Extractor
- Ongoing interior renovations in kitchen and bathrooms



## Vehicle Maintenance Program



- Hours of external Vehicle Maintenance – labor costs fully reimbursed
  - 49.5** hours of mechanic services were provided to outside Fire Agencies.
  - 63.5** hours of vehicle repair services were provided to the City of Sonoma.
  
- Value of an internal Mechanic
  - The Fire Mechanic Position performed **1,062.5** hours of work to SVFRA vehicles at a cost of **\$75,437**. If we had outsourced the work, it would have cost over **\$143,000** at current shop rates.
  - We also realize financial savings by not paying mark-up costs on parts and on transportation costs to out-of-town vendors.
  - Apparatus out-of-service time is also greatly reduced, by our mechanic's ability to address problems or repairs immediately instead of needing to schedule them with an outside vendor.

## Apparatus Replacement Program

---

The SVFRA has established a comprehensive vehicle replacement program for apparatus owned by both VOM District and City of Sonoma. Each entity contributes an annual amount to ensure that we have safe and reliable apparatus to serve the community.

Most heavy fire apparatus is on a 20-year replacement cycle, while lighter duty equipment is on a 10- or 15-year cycle based on anticipated use.

In 2017, we were able to purchase a new four-wheel-drive, Type 3 Wildland firefighting engine to replace a 20-year-old Type 3 (Wildland) fire engine. The old engine was then sold to a fire department in Lake County, where it continues to provide service.



In 2017, we also purchased a new ambulance for frontline service. This purchase allowed the SVFRA to place an older ambulance with over 200,000 miles into reserve status.



## 2017 NUNS FIRE

On the night of October 8, 2017, the most destructive fire to occur in the Sonoma Valley and, at the time, the 6<sup>th</sup> most destructive fire in California history ignited. Named the Nuns fire, it actually started as four separate fires: the Nuns, Adobe, Norrbom and Partrick, all starting less than an hour apart and eventually merging into one collective fire called the Nuns.

Approximately one week later another fire started, the Oakmont fire, which also merged into the Nuns. Ultimately, the Nuns fire consumed over 54,000 acres, 1,355 structures, claimed 3 lives, and took almost a month to fully contain. The community of Glen Ellen suffered the most concentrated loss of homes, with almost 400 structures destroyed.



Structure Defense on Cavedale Road

The weather conditions were extreme, with the relative humidity below 10% and wind gusts exceeding 60 m.p.h. With no rain for several months and fuel moisture critically low, the vegetation ignited easily and burned intensely.

The Nuns fire was first caused by a tree limb that blew into power lines near the intersection of Nuns Canyon Road and Nelligan Road. The fire immediately took off into both the Beltane Ranch and Atwood Ranch, consuming a few outbuildings and threatening many structures. Initially, the SVFRA units, along with assistance from Kenwood, Lakeville, and Mayacamas VFD were very successful and able to save over a dozen structures on both of those ranches. The SVFRA committed over a dozen units to assist in the protection of these structures.

Unfortunately, the wind became more intense and erratic, blowing the fire across Highway 12 and into the Trinity Oaks neighborhood and eventually into the community of Glen Ellen. Evacuation of the residents became the incident priority until all residents were safely removed from harm. The SVFRA ultimately committed over a dozen units that engaged in structure defense in and around the Glen Ellen community for over 4 days. These units were able to successfully save the downtown Glen Ellen area as well as several historic structures and the Donahue Tract (neighborhood south of the Developmental Center).



**Jack London Lodge Hotel**

Additionally, the SVFRA sent three engines to the Norrbom/Partrick incidents for an extended period of time. These units assisted the Schell-Vista FPD with Evacuation and Structure Defense in the affected areas around the City of Sonoma. The thousands of evacuees created additional impacts on our emergency response system, as well. The City of Sonoma provided shelters for a majority of the evacuated residents at the high school, Adele Harrison Middle School, and the Veterans' building. We provided staffing for additional ambulances and fire apparatus to keep up with the routine calls that were still occurring within the SVFRA boundaries. The dedication from the SVFRA personnel was incredible, as all full-time and part-time personnel responded to this disaster, some while knowing that their homes were burning or threatened by fire.



The community's support during this disaster was also unprecedented, as residents came together to help in many different ways. Assisting neighbors safely evacuate, staffing evacuation centers, and providing meals for firefighters and evacuees, were just a few of the examples of how the community came together. The support that firefighters received from this community was overwhelming. From hot meals every night to signs posted everywhere, first responders from all over the county were humbled by the graciousness and appreciation of our community.



As our community rebuilds from this disaster, we are still coping with the losses that will forever be etched into the Valley's history. We look forward to having closure to this incident and hope that Sonoma Valley will never have to "Rise from the Ashes" again.

